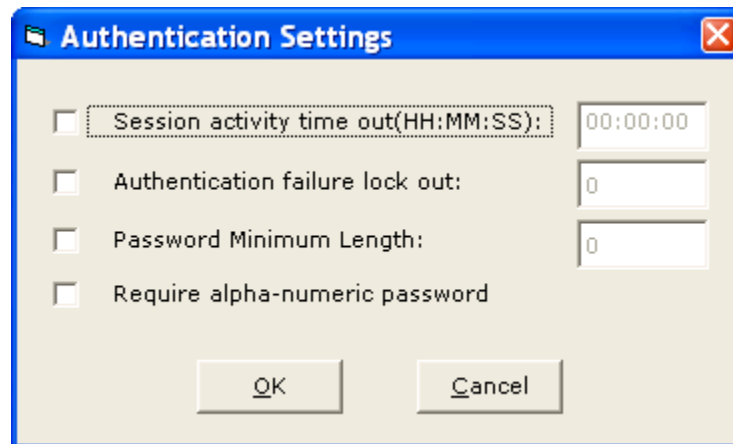




Security Features in eCW

Concerned about the security of your patient information? eClinicalWorks has a number of features available for your use.

- Automatic time out for inactive sessions
- Log in lock out after a specified number of log in attempts
- Required password length
- Alpha-numeric password requirement



These features can only be accessed by the clinic eCW administrator (File/Settings/Authentication Settings)

- Security settings by user or role (File/Security Settings)
- Inactive designation for staff and providers (Admin band)
- P.S.A.C. option to designate confidential charts (this feature must be enabled by Support)

When staff or providers leave your practice designate them as inactive and don't forget about remote (VPN) access!!